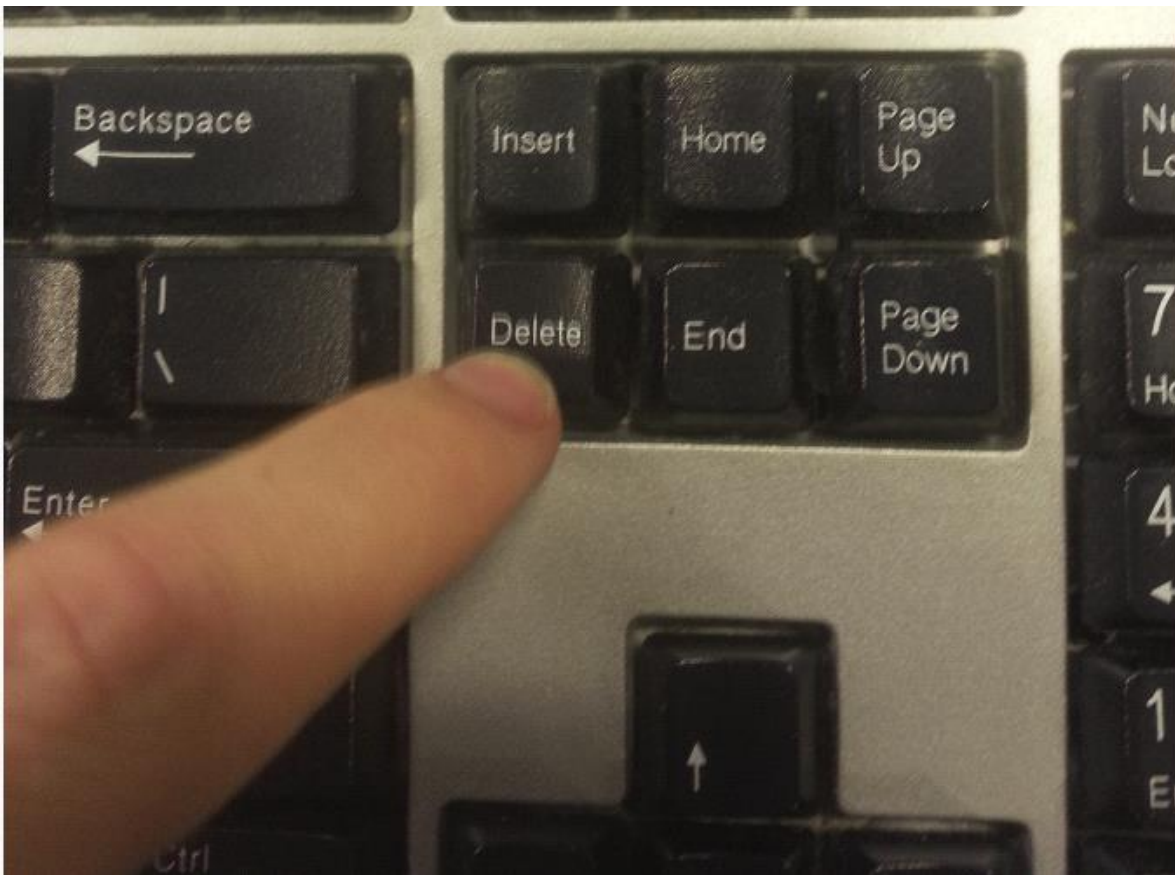


# Enabling UEFI

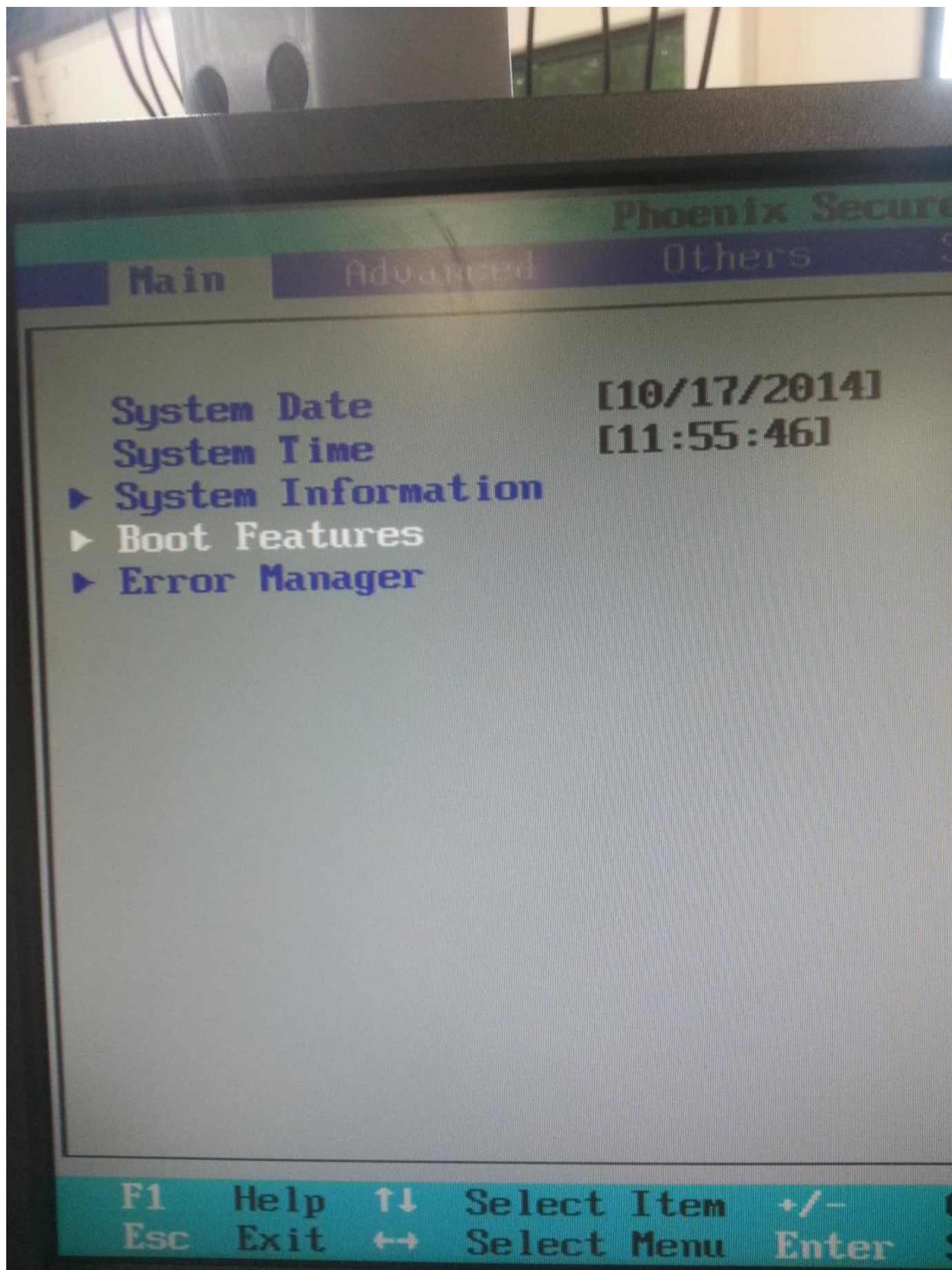
Friday, October 17, 2014 9:29 AM



First, power on the unit with a Keyboard and Monitor attached.



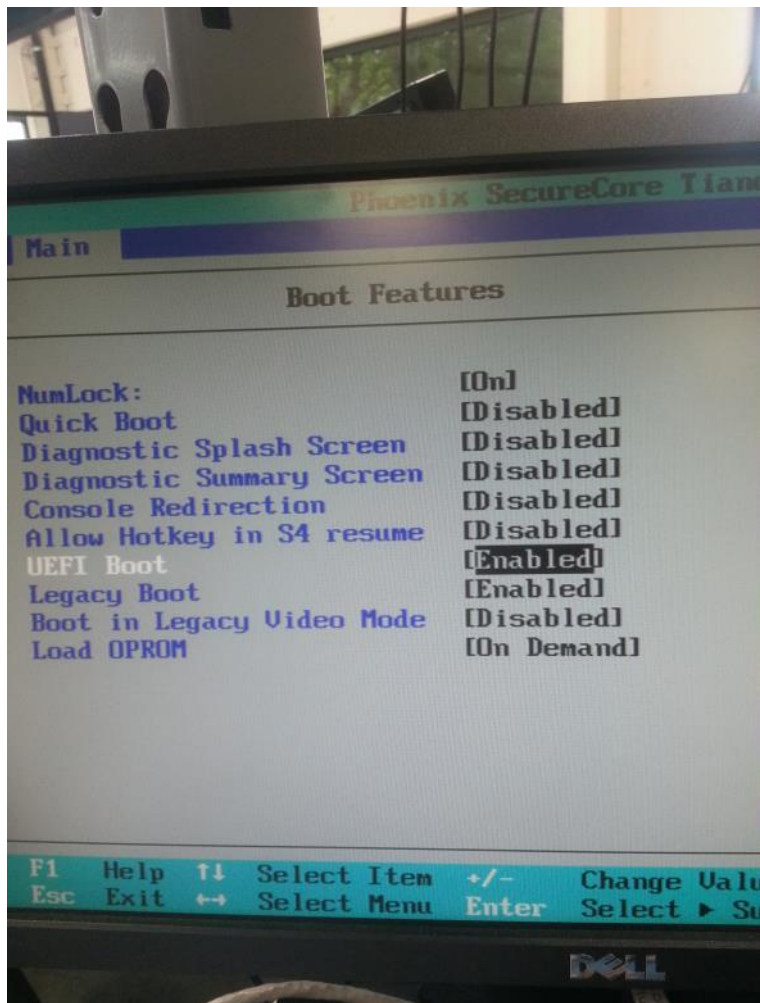
Within the first few seconds after pressing the power button, REPEATEDLY start hitting the delete button to get into the BIOS settings.



After approximately 20 - 40 seconds, you should reach this screen. (you can stop hitting delete at this

point) Using the arrow keys on the keyboard, scroll down to "Boot Features" and hit "Enter"

Note: If you do not see "Boot Features" on this page, then it is very likely that you have the old motherboard, and this procedure is null



This is where you will be able to verify if UEFI is enabled. If this says DISABLED, then you must scroll down with the arrow keys to the "UEFI Boot" option and Hit enter. This will bring up a small window with the option of "Enabled or Disabled" Hitting enter while "Enabled" is highlighted will change this setting. Hitting F10 will allow you to save and exit.